

## Tamping Rammers MTX Series

Mikasa® 4-stroke Tamping Rammers are perfectly balanced to deliver hard hitting compaction while ensuring operator comfort through reduce noise and low Vibration Absorbing System handle.

### Central Lifting Hook

Easy and safe onsite handling.

### Engine Hour Meter

Hour meter for management of service intervals and it also monitors engine RPM for optimum compaction performance.



### Cyclonic Air Filtration System

For superior air filtration to lengthen service internals and improve engine protection.



### Fully Integrated Control Switch

Controls On / Off switch, Fuel Tap and Engine Throttle all in one lever.



### Handle Roller

Easy loading into vehicles and the unit can also lie down to 90° for transport.

### Low Vibration Handles

Vibration Absorbing System for reduced hand and arm vibration transfer to the operator.

Hand- arm vibration (HAV) is vibration transmitted to a person's hand and arm when using hand-held power tools, hand guided machinery like small compaction equipment or while holding materials being processes by plant.

Exposure to HAV can lead to

- Hand- arm vibration syndrome
- Carpal tunnel syndrome (CTS)



### Engine Guard

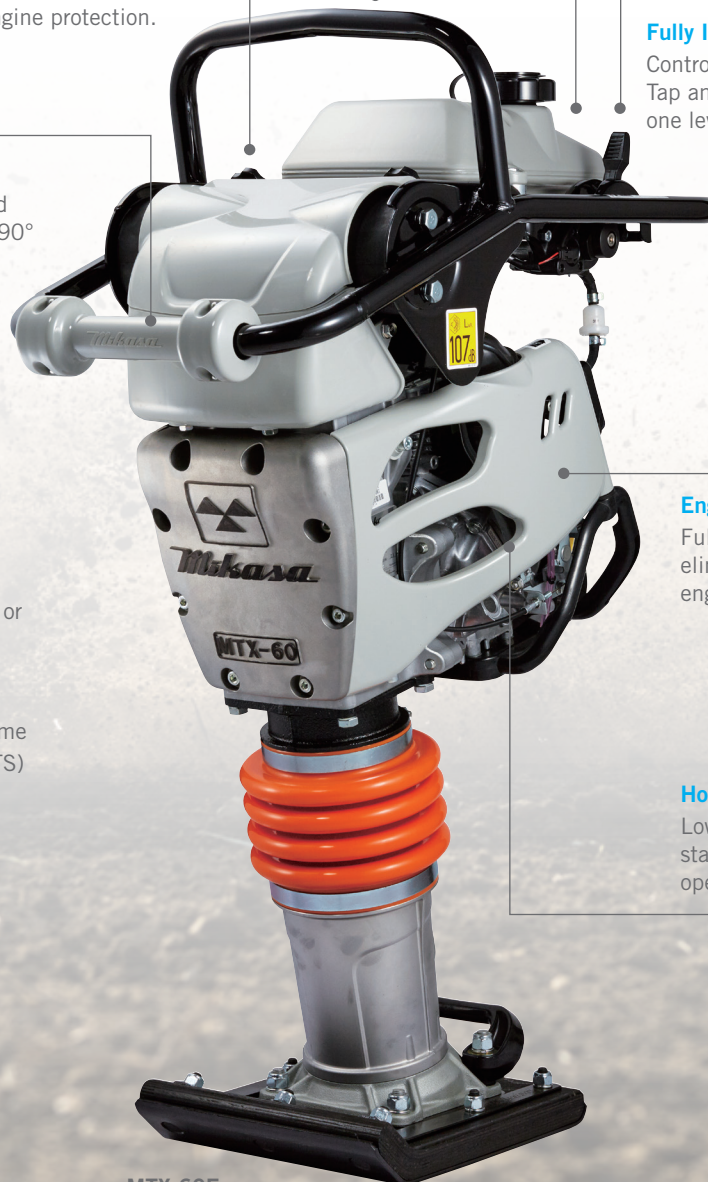
Fully protected engine to eliminate damage to critical engine components.



### Honda 4 Stroke Engine

Low emissions, easy starting and quiet operation.

POWERED by **HONDA**



MTX-60E

# Tamping Rammers MTX Series



**MTX-60E**  
Shoe Size (WxL)  
265mm x 340mm



**MTX-70E**  
Shoe Size (WxL)  
285mm x 340mm

POWERED by  
**HONDA**

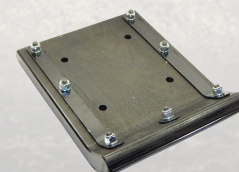
| MODEL                           | MTX-60E       | MTX-70E       |
|---------------------------------|---------------|---------------|
| Operating Weight (kg)           | 64            | 75            |
| Jumping Stroke (mm)             | 50-80         |               |
| Impact Rate (blows/m)           | 644-695       |               |
| Impact Force (Max) (kN)         | 13.6          | 14.9          |
| Average Travel Speed* (m/min)   | 10-12         |               |
| Compaction Depth* (cm)          | 50-85         | 45-70         |
| Engine Make & Model             | Honda GX100   |               |
| Max Rated Power (Hp)            | 3             |               |
| Average HAV (m/s <sup>2</sup> ) | 5.2           | 5.6           |
| Fuel Type                       | P             |               |
| Fuel Tank Capacity (L)          | 2.5           | 3             |
| Product Code                    | FT2TX60E-UNIT | FT2MTX70-UNIT |
| Barcode                         | 9300611572813 | 9330221073660 |

\*Travel speeds and compaction depth are subject to vary based on different soil conditions. Specifications published are based on average performance results.

## ACCESSORIES

### REPLACEMENT SHOE

| MODEL        | MTX-60E       | MTX-70E       |
|--------------|---------------|---------------|
| Product Code | NPS70638-UNIT | NPS70430-UNIT |
| Barcode      | 9330221070368 | 9330221070430 |



### TRENCHING SHOE (115MM WIDE X 330 HIGH)

| MODEL        | MTX-60E       | MTX-70E       |
|--------------|---------------|---------------|
| Product Code | NPS51907-UNIT | NPS51919-UNIT |
| Barcode      | 9330221068772 | 9330221068765 |



### TRENCHING SHOE (165MM WIDE X 330 HIGH)

| MODEL        | MTX-70E       |
|--------------|---------------|
| Product Code | NPS51931-UNIT |
| Barcode      | 9330221068758 |

1300 353 986  
www.flextool.com.au