

# MIKASA TAMPING RAMMER MT-e55

Mikasa Tamping Rammers are perfectly balanced to deliver hard hitting compaction while ensuring optimised operator comfort. Engineered with a Vibration Absorbing System, motor guard and integrated control switch, the Mikasa Tamping Rammers offer superior build quality and excellent performance. Mikasa's battery powered compaction equipment range features a Honda eGX-Series electric motor which is powered by an interchangeable lithium-ion battery pack, capable of rapidly charging to 80% capacity in only 60 minutes. These zero emission and reduced noise level machines are a great alternative to the engine powered equivalents, especially when operating in noise and fume restricted environments.

#### Lifting hook

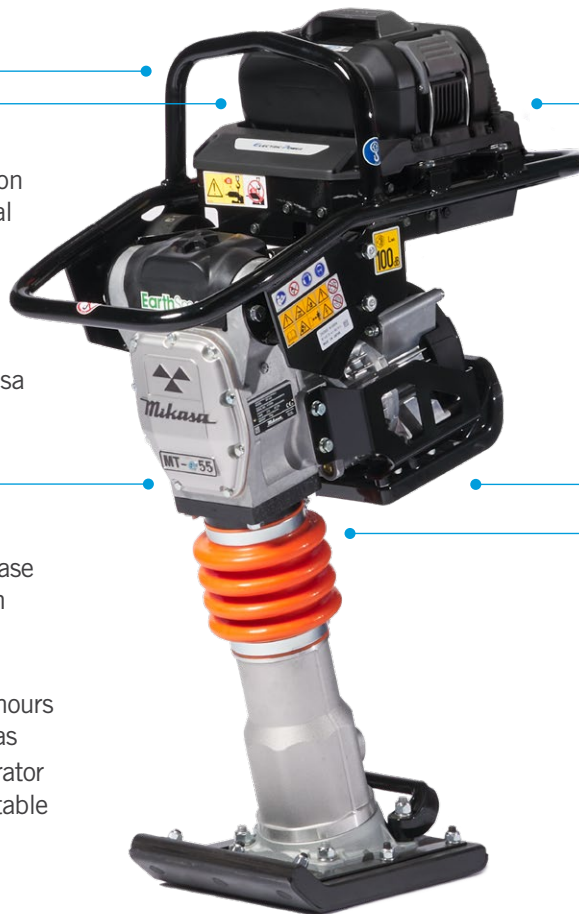
Central lifting hook for easy and safe onsite handling

#### Honda eGX battery

- Quick charging 72 volt lithium-ion battery for maximized operational productivity
- Reaches 80% charge in 60 minutes, fully charged in 90 minutes
- Interchangeable with other Mikasa battery powered soil compaction equipment

#### Honda eGX motor

- High-efficiency, high-power 3 phase brushless DC motor for maximum performance and reliability
- Zero operating emissions
- Low noise offers expanded work hours and usage in noise restricted areas
- Low motor vibration reduces operator fatigue, providing a more comfortable work environment



#### Variable speed

Variable speed motor allows for quick and easy selection of three operating speeds to suit most job site requirements

#### Motor guard

Fully protected motor to eliminate damage to critical motor components

#### Vibration Absorbing System

Low vibration handles for reduced hand and arm vibration transfer to the operator

POWERED by  
**HONDA**

## MIKASA TAMPING RAMMER



MT-e55



Model	Operating Weight (kg)	Shoe Size w x l (mm)	Jumping Stroke (mm)	Impact Rate (blows/m)	Max Impact Force (kN)	Average Travel Speed* (m/min)	Compaction Depth* (cm)	Motor Make & Model	Rated Power Cont / Max (kW)	Average HAV (m/s <sup>2</sup> )	Run time (min)	Product Code
MT-e55	75	265 x 340	30-70	574-689	10.8	10.6	40-60	Honda GXE2.0S	1.6 / 2.4	3.6	up to 30 min	FT272787-UNIT

## HONDA EGX BATTERY (SOLD SEPARATELY)

Battery Type	Battery Capacity (Ah)	Energy Content (Wh)	Battery Weight (kg)	Voltage (V)	Charge Time	Product Code
Li-ion	10	748	6.4	72	80% charge in 60 minutes 100% charged in 90 minutes	FT272790-UNIT



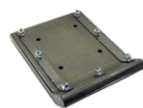
## HONDA EGX CHARGER (SOLD SEPARATELY)

Charger Weight (kg)	Voltage (V/A)	Product Code
11.0	240 / 10	FT272791-UNIT



## REPLACEMENT SHOE

Model	Product Code
MT-e55	NPS70638-UNIT



Replacement shoe

## TRENCHING SHOE (115 MM WIDE X 330 MM HIGH)

Model	Product Code
MT-e55	NPS51907-UNIT



Trenching shoe

\* Travel speeds vary based on different soil conditions. Specifications published are based on average performance results.

\*\* 3 year warranty covers MT-e55 body only. Honda eGX battery and charger are covered by a separate 2 year warranty.